




<b>UK EPR</b>	Title: PCSR – Sub-chapter 17.2 – Demonstration of Relevant Good Practice in EPR Design	
	<b>UKEPR-0002-172 Issue 03</b>	
	Total number of pages: 34	Page No.: I / III
Chapter Pilot: M. BERNARD		
Name/Initials  Date 28-02-2011		
Approved for EDF by: A. PETIT	Approved for AREVA by: C. WOOLDRIDGE	
Name/Initials  Date 28-03-2011	Name/Initials  Date 28-03-2011	

### REVISION HISTORY

Issue	Description	Date
00	First issue for INSA review	22/4/2008
01	Integration of technical and INSA review comments	28/6/2008
02	PCSR June 2009 update: – Inclusion of references in standard format	27/06/2009
03	Consolidated Step 4 PCSR update: – minor editorial changes	28/03/2011

<b>UK EPR</b>		
	Title: PCSR – Sub-chapter 17.2 – Demonstration of Relevant Good Practice in EPR Design	
	<b>UKEPR-0002-172 Issue 03</b>	Page No.: II / III

**Copyright © 2011**

**AREVA NP & EDF  
All Rights Reserved**

This document has been prepared by or on behalf of AREVA NP and EDF SA in connection with their request for generic design assessment of the EPR™ design by the UK nuclear regulatory authorities. This document is the property of AREVA NP and EDF SA.

Although due care has been taken in compiling the content of this document, neither AREVA NP, EDF SA nor any of their respective affiliates accept any liability in respect to any errors, omissions or inaccuracies contained or referred to in it.

All intellectual property rights in the content of this document are owned by AREVA NP, EDF SA, their respective affiliates and their respective licensors. You are permitted to download and print content from this document solely for your own internal purposes and/or personal use. The document content must not be copied or reproduced, used or otherwise dealt with for any other reason. You are not entitled to modify or redistribute the content of this document without the express written permission of AREVA NP and EDF SA. This document and any copies that have been made of it must be returned to AREVA NP or EDF SA on their request.

Trade marks, logos and brand names used in this document are owned by AREVA NP, EDF SA, their respective affiliates or other licensors. No rights are granted to use any of them without the prior written permission of the owner.

#### **Trade Mark**

EPR™ is an AREVA Trade Mark.

#### **For information address:**



AREVA NP SAS  
An AREVA and Siemens Company  
Tour AREVA  
92084 Paris La Défense Cedex  
France



EDF  
Division Ingénierie Nucléaire  
Centre National d'Équipement Nucléaire  
165-173, avenue Pierre Brossolette  
BP900  
92542 Montrouge  
France

<b>UK EPR</b>		
	Title: PCSR – Sub-chapter 17.2 – Demonstration of Relevant Good Practice in EPR Design	
	<b>UKEPR-0002-172 Issue 03</b>	Page No.: III / III

## TABLE OF CONTENTS

1. INTRODUCTION
2. EPR DESIGN PROCESS
  - 2.1. ORGANISATIONS INVOLVED IN EPR DESIGN AND LICENSING
  - 2.2. MAIN PHASES OF THE EPR PROJECT
  - 2.3. PRODUCTION OF “TECHNICAL GUIDELINES”
  - 2.4. REVIEW AND VALIDATION OF EPR DESIGN OPTIONS
  - 2.5. SUMMARY OF R&D WORK UNDERPINNING THE EPR DESIGN
3. CODES AND STANDARDS USED FOR EPR DESIGN
4. INCORPORATION OF EXPERIENCE FEEDBACK INTO THE EPR DESIGN
5. COMPARISON OF EPR DESIGN WITH HSE/NII SAPS
6. CONCLUSIONS ON DEMONSTRATION OF RELEVANT GOOD PRACTICE

## **SUB-CHAPTER 17.2 - DEMONSTRATION OF RELEVANT GOOD PRACTICE IN EPR DESIGN**

### **1. INTRODUCTION**

Guidance from HSE/NII in application of the As Low As Reasonably Practicable (ALARP) principle to new UK nuclear power stations requires a demonstration that the design process has followed Relevant Good Practice [Ref].

The present sub-chapter summarises the relevant good practices and standards applied in the EPR design process. In particular, information is presented on the following:

- Review of the experience of EPR designers and a summary of the review and assessment process applied to the design. Summary of R&D effort underpinning the EPR design.
- Review of the design codes used in EPR design, taken from Sub-chapter 3.8 of the PCSR. Reference is made to international/national codes.
- Use of operational feedback from French and German plants in optimising EPR design.
- Discussion of a comparison of the EPR design against the HSE/NII Safety Assessment Principles (SAPs), to confirm that all the key nuclear safety requirements embodied in the SAPs are met by the EPR design.

### **2. EPR DESIGN PROCESS**

The EPR is a Generation 3+ PWR design developed by NPI (now AREVA NP) a joint subsidiary of FRAMATOME and Siemens, using experience gained by EDF, the German Utilities, FRAMATOME and Siemens in the design, manufacturing, construction, and operation of PWRs (corresponding to over 1000 reactor-years of operation). The reactor has been designed to meet safety specifications developed by the French Nuclear Regulatory Authority (ASN) as set down in the Technical Guidelines (TGs) [Ref]. These guidelines were developed following an extensive optioneering process carried out in France and Germany between 1987 and 2000, on the design of a Generation 3 PWR suitable for construction in Europe in the 21<sup>st</sup> century. The outcome of the optioneering exercise was reviewed by independent safety experts from several European Countries and the USA, on behalf of the French and German regulatory authorities.

A description of the design development and design review process and the organisations involved is given below.

## **2.1. ORGANISATIONS INVOLVED IN EPR DESIGN AND LICENSING**

The three main types of organisations involved in the design and licensing process of the EPR have been the design organisations, the safety authorities (in France and Germany) and the bodies appointed to provide technical support to the safety authorities. A description of these bodies and their roles is given below. The organisational arrangements are shown in Sub-chapter 17.2 - Tables 1 and 2.

### **2.1.1. Design organisations**

The EPR design organisations consist of reactor vendor and utility companies from France and Germany.

The EPR project began in 1987 when the vendor companies FRAMATOME and Siemens began cooperation to develop and commercialise a common PWR design aimed at the international export market. The aim of the collaboration was to pool the experience of the two companies in order to share the huge effort involved in developing a new reactor design. The companies founded a joint subsidiary company Nuclear Power International (NPI) to lead the work. Within a short time French and German electrical utilities had joined the project, which rapidly replaced other reactor development programmes underway in France and Germany. The new reactor design was renamed EPR.

NPI (now AREVA NP) led the organisation for the EPR design from 1990 up to the end of the Basic Design Optimisation phase in 2000. In 2003, AREVA NP was awarded the supply contract for the Olkiluoto 3 (OL3) EPR in Finland, under a turnkey scheme, and developed the detailed design.

When the detailed design phase for FA3 began (after the Basic Design Optimisation Phase), EDF, in its role as Architect Engineer for EPR power stations constructed in France, led the detailed design effort, in cooperation with AREVA NP and SOFINEL (a joint subsidiary of EDF and AREVA NP).

### **2.1.2. Safety authorities**

In 1989 the French and German Nuclear Safety Authorities (ASN and BMU) created a joint safety directorate (DFD) to oversee the EPR project. Cooperation agreements were signed at the same time between the French and German technical support organisations (IRSN and GRS), and between the independent safety advisory groups supporting both regulators (the GPR in France and the RSK in Germany).

At that time, the French and German safety authorities were as follows:

- French Nuclear Installations Safety Directorate. This body is attached to the Ministries for Industry, for Health and for Environment. Its main duty is to conduct or monitor the regulatory procedures as required under the Basic Nuclear Installation Decree (December 11, 1963).
- German Federal Ministry for Environment and Reactor Safety (BMU).

### **2.1.3. Bodies providing technical support to national safety authorities**

During the evaluation and assessment of the EPR design, the French nuclear safety authority was supported by the following organisations:

- The Institute for Nuclear Safety and Radioprotection (IRSN, formerly IPSN). The role of the IRSN, which consists of 1500 professional scientists and engineers, is to provide technical support to the French safety authority in relation to reactor safety and licensing and to conduct analytical studies, research and other work relating to nuclear safety on behalf of ministerial departments and interested organisations. Results of IPSN/IRSN studies are submitted to GPR (see below) and/or to the French safety authority.
- The Central Committee for Pressure Vessels (CCAP, article 26 of decree 99-1046 of 13 December 1999 concerning pressure vessels) is a consultative organisation. It comprises members of the various administrations concerned, persons chosen for their particular competence and representatives of the manufacturers and users of pressure vessels and of the relevant technical and professional organisations.
- For particular supervision of the more important pressure vessels in nuclear installations, the CCAP set up a Standing Nuclear Section (SPN), the role of which is to issue recommendations on application of pressure vessel regulations to the main nuclear steam supply systems.
- The Standing Group for Nuclear Reactors (GPR). This is an advisory body established by the French Minister of Industry, to support the French regulatory authority. It consists of 30 professional scientists and engineers from France, other European countries, and members of French Safety Authorities and advisory bodies, who are specialists in the fields of safety, construction, commissioning and operation of nuclear reactors.

In Germany, BMU was supported by the Gesellschaft für Anlagen und Reaktorsicherheit (GRS) which plays the same role as the IPSN (IRSN) in France, and the Reaktor Sicherheitskommission (RSK) which plays the same role as the French GPR.

After the completion of the Basic Design Phase of the EPR in 1998, BMU withdrew from the EPR design evaluation project. However, GRS and IRSN carried on with their joint review work, and experts from Germany continued to participate as invited members of the GPR, particularly in the definition of the Technical Guidelines.

## **2.2. MAIN PHASES OF THE EPR PROJECT**

The phases of the EPR design process are summarised in Sub-chapter 17.2 - Table 3 and described below.

In 1985, the REP 2000 research programme was launched in France to develop an evolutionary design for the next generation of PWRs, taking the N4 plant series (Chooz 1&2, Civaux 1&2) as a starting point, which was launched by EDF, CEA and FRAMATOME. Studies were carried out under REP 2000 on the design of key equipment and phenomena such as the fuel, core, safeguards systems, I&C and HMI, severe accidents, etc.

In 1987, FRAMATOME and Siemens began co-operation on a project to develop a next generation PWR aimed at the international market: the "Common Product". In 1989 after NPI was created, the different existing development programmes ("REP 2000", "Common Product" and Siemens and German utilities "Planung Auftrag") were merged into a wider project (EPR Project) to design and license the next generation of Nuclear Power Plants (NPPs) for construction in France and Germany. The development of this model was based on design, construction and operating experience of the French N4 and German KONVOI plants. Contacts were established with the French and German safety authorities. Both authorities responded positively and the French safety authority specified its initial views on possible improvements that could be introduced in the design of future NPPs [Ref].

In 1993 NPI submitted a conceptual design specification (Conceptual Safety Features Review File or CSFRF) for EPR to the French and German safety authorities.

In the period 1993-1995 the safety authorities, supported by IPSN/GPR and GRS/RSK, carried out a detailed assessment of the EPR design specification, and requested certain enhancements and changes. The outcome was an updated design specification (Main Feature File (MFF)) which presented the detailed design requirements for the EPR plant and the rationale for the options chosen.

The Basic Design studies were started in early 1995. In 1997 a Basic Design Report was issued and formed the first version of the EPR preliminary safety report.

Further work was carried out in the period 1997-1999 to improve and optimise the design and the investment costs within the fundamental design specification, resulting in an updated Basic Design Report (Basic Design Optimisation Phase). BMU withdrew from the joint project during this period.

Subsequently, in the period 1999-2001, there was a further Post Basic Design Optimisation Phase, in which further design consolidation took place, particularly with regard to radiation protection of workers and environmental emissions.

In 2000 the GPR adopted the Technical Guidelines [Ref], which set down design principles for future PWRs that would be acceptable for construction in France. These TGs define the initiating events that would have to be addressed within the design basis for new PWRs, and defined certain multiple failure sequences and core melt sequences that had to be considered in the design. The TGs also included requirements for design against external hazards. The functional requirements of safety systems and principles for their safety classification were stated, including assumptions that needed be made with regard to single failures, and the equipment unavailability due to maintenance.

Following issue of the TGs, further enhancements were made to the EPR design, and three further updates were produced to the EPR safety report.

In Finland, following a call for tenders by TVO for the Finland 5 Project, the EPR was selected for construction, and a contract signed in December 2003, with AREVA NP as the turn-key supplier of a plant to be constructed on the Olkiluoto site. Following the preparation by the Consortium (AREVA NP/Siemens) of the relevant technical data, the application (PSAR and related documentation) for a Construction Licence for the Olkiluoto 3 EPR, was submitted by the utility TVO in early January 2004. The Finnish Safety Authority, STUK, issued its statement and its safety evaluation on January 21, 2005, and a Construction Licence was granted in February 2005.

During the detailed design phase, detailed design modifications on both projects (in France and Finland) were the subject of discussions between AREVA NP and EDF.

In 2005, EDF applied for a license to construct the first French EPR at the Flamanville site in Normandy. A Preliminary Safety Analysis report for the FA3 EPR unit was approved by the ASN in 2006 and agreement to begin construction was given in 2007. The FA3 EPR design is the design submitted Generic Design Assessment in the UK.

Since 1993, some 6 EPR Safety Reports and approximately 180 supporting technical references have been produced and assessed in detail by independent experts in IRSN/GPR (and by GRS/RSK up to 1998). During this period approximately 90 evaluation reports were issued by IRSN/GRS, some 200 meetings were held between the EPR project (EDF, German Utilities and the industrial partners) and the regulatory agencies, and close to one million hours of work were carried out within the EDF-SA engineering functions alone.

It is thus seen that the EPR design proposed for construction in the UK has undergone a 20 year process of design optimisation to maximise the safety of the plant within the constraints of practical constructability. The design optimisation process is very similar to the process of design optimisation to achieve an ALARP position, applied in the UK. The EPR design process has been carried out in consultation with regulatory authorities in France (and Germany initially), and all design documentation has been independently reviewed and scrutinised by a large panel of experts in organisations which were independent from the vendor and utility companies.

### **2.3. PRODUCTION OF “TECHNICAL GUIDELINES”**

French and German safety authorities decided in 1995 that “technical guidelines for future PWRs” should be developed with oversight provided by the GPR and RSK standing commissions. IPSN and GRS submitted a proposal for the structure and contents for the development of these guidelines which was adopted. The outcome of this work was the publication of the “Technical Guidelines” (TGs) which brought together all recommendations of GPR and RSK (German experts) during the period 1993 - 2000.

The Technical Guidelines implement and refine the EPR conceptual safety design features identified in 1993. Several steps were involved in their production, as follows:

- The first step was to propose a structure allowing the GPR/RSK recommendations to be implemented in such a way that the technical guidelines can be used in both French and German regulatory processes. This was the objective of the work performed in 1997,
- The second step was to organise the GPR/RSK recommendations in the adopted structure. This work was performed in the first part semester of 1998,
- In 1998, IPSN/GRS began to turn the text of the GPR/RSK recommendations into guideline text, rearranging and making some changes in the material (without changing the substances of the original GPR/RSK recommendations). An intermediate version of the Technical Guidelines was issued by IPSN/GRS at the end of 1998. This document was reviewed by GPR/RSK members and by the EPR design organisation, leading to the issue of an updated version in 1999.

The final text of the Technical Guidelines was adopted by GPR and German experts during the plenary meetings held on October 19 and 26, 2000. Chapter 3 of the PCSR presents the Technical Guidelines.

## 2.4. REVIEW AND VALIDATION OF EPR DESIGN OPTIONS

Each of the EPR project partners carried out design reviews in the early preparatory phase of the EPR project, and later on during the detailed design phases after the issue of the Technical Guidelines (see Sub-chapter 17.2 – Table 3). In the period in between, NPI had primary responsibility for the EPR technical design review.

During the consolidation phase and the Basic Design phase (see Sub-chapter 17.2 - Table 3), design work was performed under a Basic Design Contract between EDF, German Utilities, FRAMATOME, Siemens and NPI. The organisational arrangements are shown in Sub-chapter 17.2 - Table 2.

The following definitions are of assistance in understanding the work organisation for the definition and validation of the main options considered during the Basic Design Phase:

- Contractor refers to the group of companies formed by NPI, FRAMATOME and Siemens, these companies being jointly and severally liable to the Utilities, under the leadership of NPI.
- Utilities refer to the group of companies comprising EDF and the German Utilities.
- Designer is any of the three companies forming the Contractor (or EDF-CNEN, to the extent it is entrusted by the Contractor to perform services).
- EPR Project Directorate (EPD): refers to a joint group formed between the Utilities and the Contractor as project organisation. It makes decisions on all technical questions, apart from those reserved for the EPR Steering Committee (ESC) or submitted by the EPD to the ESC for a decision.
- EPR Project Leader Committee (PLC): refers to a joint group formed between the Utilities and the Contractor as project organisation. It is responsible for the realisation of the decisions taken by the ESC and the EPD with regard to technical questions. Furthermore, the PLC is responsible for the execution of the work in due time and appropriate manner according to the instructions of the EPD.

The Basic Design work was performed on the basis of objectives and guidelines defined during the Conceptual Design Phase and the Consolidation Phase. These objectives and guidelines were described in the so-called Main Feature Files (MFF). The Basic Design activities involved validating and complementing the requirements stated in the MFF which were by definition general and preliminary. In some cases departures from MFF objectives were required.

The EPR Project Directorate was responsible for deciding on such changes, based on proposals made by the Project Leader Committee. If the changes were highly significant, approval was required from the EPR Steering Committee.

### 2.4.1. Work of the Committees and Technical Working Groups

The following committees and working groups met on a regular basis during the EPR design phase to make decisions and carry out actions within their respective field of responsibility.

#### 2.4.1.1. EPR Steering Committee (ESC)

The EPR Steering Committee was empowered to take any decision concerning the Basic Design Contract or where appropriate to delegate such decisions to another project body.

**2.4.1.2. EPR Project Directorate (EPD)**

The EPR Project Directorate was responsible for making decisions on all technical questions, apart from those reserved for the ESC or submitted by the EPR Project Directorate to the ESC for decision.

68 EPD Meetings were held: 27 during Conceptual Design Phase and Consolidation Phase, and 41 during Basic Design Phase and Basic Design Optimisation Phase.

**2.4.1.3. EPR Project Leader Committee (PLC)**

The EPR Project Leader Committee was responsible for the realisation of decisions taken by the ESC and the EPD concerning technical questions. Furthermore, the PLC was responsible for the execution of the work in due time and appropriate manner according to the instructions of the EPD.

The meetings of the PLC were organised in order to review the progress of the project (Progress Review Meeting), in order to control the activities of the working groups and to prepare the results for discussion in the EPD.

92 PLC Meetings were held: 36 during Conceptual Design Phase and Consolidation Phase and 56 during Basic Design Phase and Basic Design Optimisation Phase.

**2.4.1.4. Working Group Meetings**

Subject to approval of the EPD, the PLC established working groups for special problems. The working groups generally consisted of representatives of EDF and the German Utilities, as well as of members of the Contractor organisations and EDF-CNEN when acting on behalf of the Contractor.

The meetings were organised by the project leaders who nominated qualified participants from their organisation. The following items were considered by permanent working groups with regular meetings:

1. Safety principles
2. Functional engineering and transient analysis
3. Systems and process
4. Reactor core
5. Containment
6. Layout, Civil (and. radiation protection)
7. I&C
8. Electrical systems
9. Components/Equipment units of the primary circuit
10. Severe accidents and radiological calculations

The working groups were involved from the very beginning in such a way that they were aware of ongoing engineering work and of the intermediate results, so they would have a common understanding of the design choices.

### 2.4.2. Technical Reviews

In addition to the periodic meetings, Technical Reviews were organised with the participation of the Contractor and the Utilities. Reviews were performed on specific subjects, such as:

- safety and systems, in particular severe accident reviews and systems reviews,
- layout, including building layout, accident prevention for personnel, radiation protection for personnel, fire protection, and other hazards.

A Technical Review Group was composed of experts from the Contractor and from Utilities and the Project Leader Committee. At the meetings, experts from the Contractor and Utilities presented their assessment reports, under the coordination of NPI, on the technical issues addressed by the Technical Review. The members of the Technical Review Group could request any further explanations and justifications. Their conclusions were presented in a report to the Project Leader Committee (PLC).

NPI were responsible for documenting the report of the Technical Review Group and distributing it to the PLC, the PED and the participants of the Technical Review. After approval by the PLC, the report became effective. NPI then issued a complete report of the meeting, including the comments of the various organisations represented at the meeting and rationales for the conclusions reached.

Technical reviews were held during the course of the Basic Design of the EPR, on different topics such as:

- ECC Mode – September 12, 1995
- Severe Accidents – December 1, 1995
- Severe Accidents – April 11, 1996
- I&C – September 17, 1996
- Layout – March 19, 1996
- Systems – February 20, 1996
- Systems – March 5, 1996
- Systems, December 16, 1997

Following the completion of the Basic Design there were further design phases, including the Design Optimisation and Detailed Design phases (see Sub-chapter 17.2 - Table 3). Technical Review Group meetings continued during these phases, addressing topics such as the design of the containment building and its liner, design of ventilation systems, selection of steam generator tube material, human factors, human-machine interface, radiological protection and environmental impact.

The phase of the project following the issuance of the Technical Guidelines is of particular interest for design process, as the French safety authority requested a number of improvements to the EPR design.

As a result of the requests, several letters were sent to the French safety authority in late 1999 and early 2000, making commitments to improve the design in areas such as:

- demonstration that some accident sequences (rapid reactivity insertion accidents, containment bypass sequences) would be “practically eliminated” from the design basis,
- reducing the consequences of accidents involving core melt (hydrogen mitigation, cooling of the corium, ...) and proposals regarding the design of systems to be used in these situations,
- role of the containment building and the peripheral buildings in the design of the “containment function”,
- definition of reference events considered in the design basis of the EPR, in particular with regard to cooling of the fuel inside the spent fuel pool,
- consideration of earthquakes in the design and the combination of loads to be assumed in design conditions with loads due to the design basis earthquake,
- the programme to be implemented for the equipment qualification, to ensure demonstration of qualification before start-up of the plant,
- the design objectives for radiation protection, radioactivity releases and radioactive waste production,
- consideration, at the design phase, of the specific needs and provisions to facilitate decommissioning of the EPR.

In addition, and on the basis of these commitments, design reviews on specific items were also conducted, including severe accident mitigation strategy, strategy for radiation protection etc.

## **2.5. SUMMARY OF R&D WORK UNDERPINNING THE EPR DESIGN**

An extensive programme of Research and Development (R&D) work has been undertaken to validate EPR design aspects where changes have been made with respect to earlier plants. The R&D work is divided into 3 categories:

- Category 1: R&D work essential for the design and for the validation of key design choices (e.g. the behaviour of corium outside the reactor pressure vessel)
- Category 2: R&D work useful for improving and optimising the design (e.g. on the reactor vessel failure modes).
- Category 3: R&D confirmatory studies and work providing additional information to substantiate current design choices (e.g. steam explosion).

A summary of the main research areas is given below.

### **2.5.1. Subjects not related to severe accidents**

Specific R&D not related to severe accidents is, in general, limited to qualification, adaptation or improvement of existing equipment. R&D topics studied cover the following areas:

- Elements within the vessel and in the bottom of the vessel,

- Control rods,
- Heavy reflector,
- Mitigation of accidents involving the loss of primary coolant,
- Mitigation of intermediate accidents involving the loss of primary coolant / steam generator pipe ruptures,
- Steam generator components

These topics have been the subject of an R&D programme for developing models and simulations for confirming the correct operation of EPR design features where differences exist with existing French and German plants. R&D programmes and tests are listed in Sub-chapter 17.2 – Table 4.

### **2.5.2. Severe accident topics**

Specific EPR design features have been developed for mitigation of accidents involving core melt. In general terms no comparison with the existing French and German plants is possible. New R&D work was deemed necessary to justify the design solutions selected for the EPR, as R&D work in progress worldwide in the area of severe accidents was not specific to the EPR. Nevertheless, relevant worldwide R&D work on this subject was taken into account. The main areas of work were development and validation of calculation codes, including benchmark and validation tests at different scales with simulated and actual materials to identify key phenomena.

The following topics related to severe accidents were addressed in the programme. The work involved both general R&D carried out at research centres and specific R&D performed or initiated by the EPR designers:

- Performance of RCP [RCS] depressurisation valves,
- Vessel internals (lower section),
- Design of the reactor vessel support and the reactor vessel cavity, and behaviour of the RCP [RCS] in core melt situations
- Stabilisation of core melt,
- Mitigation of H<sub>2</sub> build-up,
- Removal of heat from the containment,
- Methods for limitation of radioactive releases,
- Internal structure of the containment

These topics have been the subject of experimental programmes to validate the design of EPR specific design features. R&D programmes and tests are listed in Sub-chapter 17.2 – Table 4.

### 3. CODES AND STANDARDS USED FOR EPR DESIGN

Sub-chapter 3.8 of the PCSR provides an overview of the codes and standards used for the EPR design. The codes and standards are part of the French nuclear regulatory regime.

The relevant codes and standards comprise:

- The RCC-M technical code for mechanical equipment: Initially based on the US ASME code, RCC-M contains design and construction rules (design basis and analysis of behaviour, specifications for manufacturing and inspection of equipment) for pressure vessels, reactor internals and nuclear island pipework and equipment supports. It codifies French industrial practice and derives benefit from experience from manufacture, inspection and operation of French NPP units,
- The RCC-E technical code for electrical equipment: RCC-E provides a supplement to international standards (IEC standards) and French standards (AFNOR standards), to include subjects which are not yet covered by the latter or to supply clarification when existing standards do not adequately encompass the specific requirements of the nuclear industry. The level of detail is thus somewhat variable. RCC-E applies to electrical equipment whose failure can have consequences for the safety of people or a significant effect on the availability of the plant,
- The EPR Technical Code for Civil Works (ETC-C): ETC-C contains rules for the design, construction and testing of the EPR civil engineering structures. It describes the principles and requirements for safety, serviceability and durability conditions for concrete and steelwork structures on the basis of Eurocode design principles (European norms for structures) together with specific provisions for safety-class buildings and in relation to RCC-M. The section covering "design" lays down the essential actions and requirements by which buildings and structures are engineered,
- The EPR Technical Code for Fire Protection (ETC-F): ETC-F contains requirements for fire protection (prevention, detection and suppression) in the design of the EPR Plant. It is based on the existing French RCC-I code (June 92 issue) applicable to current French nuclear plants, on French AFNOR standards and the relevant German KTA-Safety Standards (applicable to German plants). ETC-F is the result of a long process of development using experience from the construction programme of French and German nuclear plants including feedback experience from fire events occurring in these units. ETC-F states requirements for fire protection but does not propose design solutions to meet these requirements.

The development of Design and Construction Rules concerning mechanical and electrical equipment is carried out within AFCEN (French association for codes and standards), which was created in 1980 to develop French Nuclear Codes and Standards for different types of plant. EDF and AREVA NP participate in the improvement of the codes through their involvement in AFCEN. This also ensures consistency between the current version of the codes and the design.

During the operational life of the plant, Periodic Safety Reviews will be performed to prepare ten-yearly in service inspections. These reviews provide the opportunity to check for revisions of referential codes and standards and to make decisions on the implementation of resulting plant modifications.

Sub-chapter 3.8 includes a description of the AFCEN organisation.

Sub-chapter 3.8 also compares the EPR design codes with international codes and standards and confirms that relevant international standards are equivalent to the EPR codes.

## **4. INCORPORATION OF EXPERIENCE FEEDBACK INTO THE EPR DESIGN**

In designing the EPR it was decided to follow an evolutionary approach: the advantage of basing an advanced design on operational experience from approximately 100 PWR nuclear power plants in the world (Belgium, Brazil, China, France, Germany, Korea, South Africa, Spain) constructed by FRAMATOME and Siemens was deemed by the designers to be very important.

In addition, experience feedback from other nuclear power plants has been reviewed and design features addressing any generic safety issues identified have been taken into account. The following examples illustrate this approach:

- Steam Generator (SG) tube integrity has been improved by the choice of Inconel 690 as the tube material to avoid corrosion cracking and intergranular attack. Denting and fretting are prevented by an optimised design of the internals and supports. In addition, the design provides accessibility to the tube bundle for inspection and maintenance.
- Overfilling of SG in case of SG tube rupture is avoided by reducing the head developed by the Medium Head Safety Injection (MHSI) pumps, by automatic initiation of fast RCP [RCS] cooldown and by an automatic shutdown of RCV [CVCS] charging pumps on detection of a high water level in the Steam Generators.
- RIS [SIS] sump blockage: in order to avoid blockage by insulation material and other debris, a staggered strategy for debris retention is adopted: this includes use of weirs and a trash rack for protection of openings in the heavy floor, large retention baskets with overflow space below the heavy floor opening and large screens with small meshes. The large screens with small mesh size above the sump pit have a robust construction to cope with increased head losses due to debris blockage and inclined subdivided sump screens are employed in order to facilitate filter cake detaching.
- In order to improve SG feedwater system availability, the EPR is equipped with a four independent train Emergency Feedwater System, each train being powered by a segregated diesel generator. In addition, the plant design includes a Startup and Shutdown Feedwater System.
- Improved reliability for the power supply system: The Emergency Power Supply System is equipped with four separate and independent diesel generator units that are safety grade and they are automatically started by low voltage or low frequency signals. In addition, the Station black-out power supply has two separate and independent diesel generators which are of a diverse design from the emergency diesel generators sets; they are also safety classified.
- Following a core melt accident, the containment integrity is ensured through design measures dealing with hydrogen detonation, direct containment heating, vessel lift, ex-vessel steam explosion, basemat (foundation raft) melt-through, containment pressurisation and containment leakage.

- Improved electrical design taking into account operating experience from the incident of 25 July 2006 at the Forsmark NPP in Sweden: the diversification in the power supply for I&C has been improved by adding four new distribution switchboards (220V DC) and by requiring diversification of suppliers for the 2 hour batteries between divisions 1/2 and 3/4. In addition, the protection of inverters in case of over-voltage has been modified (in particular, no inverter disconnection on high input voltage).

A systematic review has been carried out to confirm that the EPR design addresses generic issues identified in IAEA Technical Documents [Ref]. A similar review in regard of NRC generic safety issues (NUREG 09333) is in progress for a US EPR in the framework of USNRC Design Certification.

EDF and AREVA, who are co-applicants for Generic Design Acceptance for the UK PWR, remain actively aware of international developments in reactor design, operation and regulation through participation in a range of international organisations. In particular EDF is a member and active participant in the World Association of Nuclear Operators and AREVA chairs the FRAMATOME Reactor Owners Group.

## 5. COMPARISON OF EPR DESIGN WITH HSE/NII SAPS

The UK HSE has developed Safety Assessment Principles (SAPs), against which it assesses safety submissions for civil nuclear facilities in the UK [Ref]. The SAPs are deemed to express HSE/NII views on relevant good practice in reactor design and operation. Whilst the concept of compliance cannot be strictly applied between a design and an assessment principle, it has nonetheless been decided to perform a comparison between the EPR design and the expectations of the SAPs. This comparison is intended to be a contribution to the demonstration that the EPR design process has followed "relevant good practice", as required by the guidance from HSE/NII in application of the ALARP principle [Ref].

The EPR design was developed within a French and German framework involving both national Safety Authorities. The Safety Authorities produced a specific set of recommendations for the design of new PWRs, known as the "Technical Guidelines", which were the fundamental requirements applied to the EPR design. Subsequently, the EPR design was compared against international standards such as IAEA safety guidelines, EURs and WENRA reference levels. These guidelines and principles do not correspond in all respects to the recommended practices suggested in the SAPs. Nonetheless, it is considered that all the key nuclear safety requirements embodied in the SAPs are met by the EPR design, and in particular that the EPR achieves the fundamental objective that the radiological risk to workers and the public is as low as reasonably practicable, which is the basic legal requirement underpinning UK nuclear safety regulations.

The detailed results of the assessment of the EPR design against the SAPs are presented in the document "Comparison of EPR design with HSE/NII SAPs" [Ref].

## **6. CONCLUSIONS ON DEMONSTRATION OF RELEVANT GOOD PRACTICE**

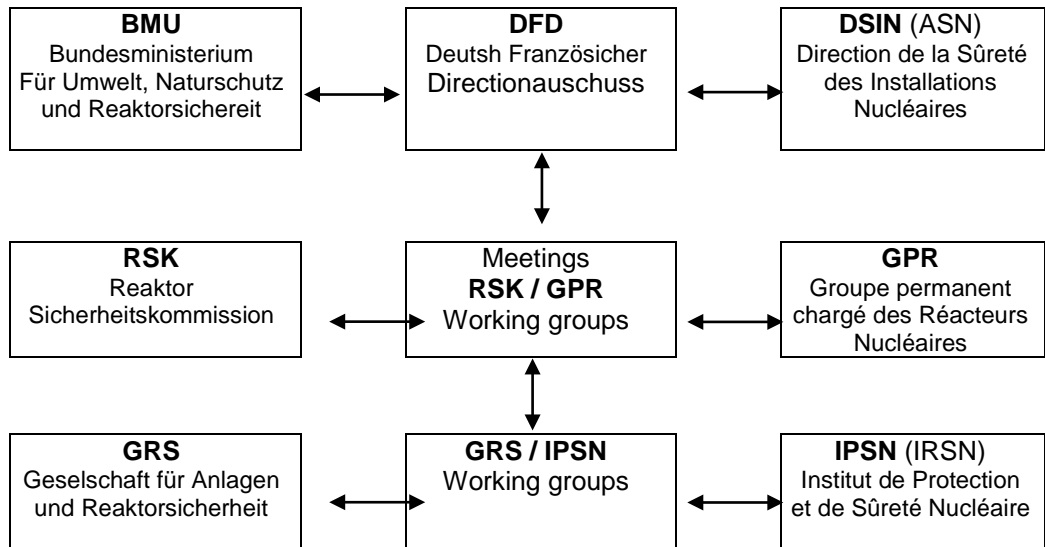
Guidance from HSE/NII on application of the ALARP principle to new UK nuclear power stations requires a demonstration that the design process has followed Relevant Good Practice. Such a demonstration involves showing that the plant has been designed against internationally accepted codes and standards, and that feedback from relevant plant operating experiences and R&D is included in the design, and that compliance is achieved with HSE/NII Safety Assessment Principles.

The present sub-chapter provides the demonstration of relevant good practice for the EPR design by summarising:

- the experience of EPR designers and the assessment process applied to the design,
- the R&D effort underpinning the design,
- the design codes and standards used in EPR design and their relationship to international codes,
- the use of operational feedback from French and German plants in optimising EPR design,
- the comparison of the EPR design against NII SAPs to confirm that the SAPs requirements applicable at the plant design stage have been addressed.

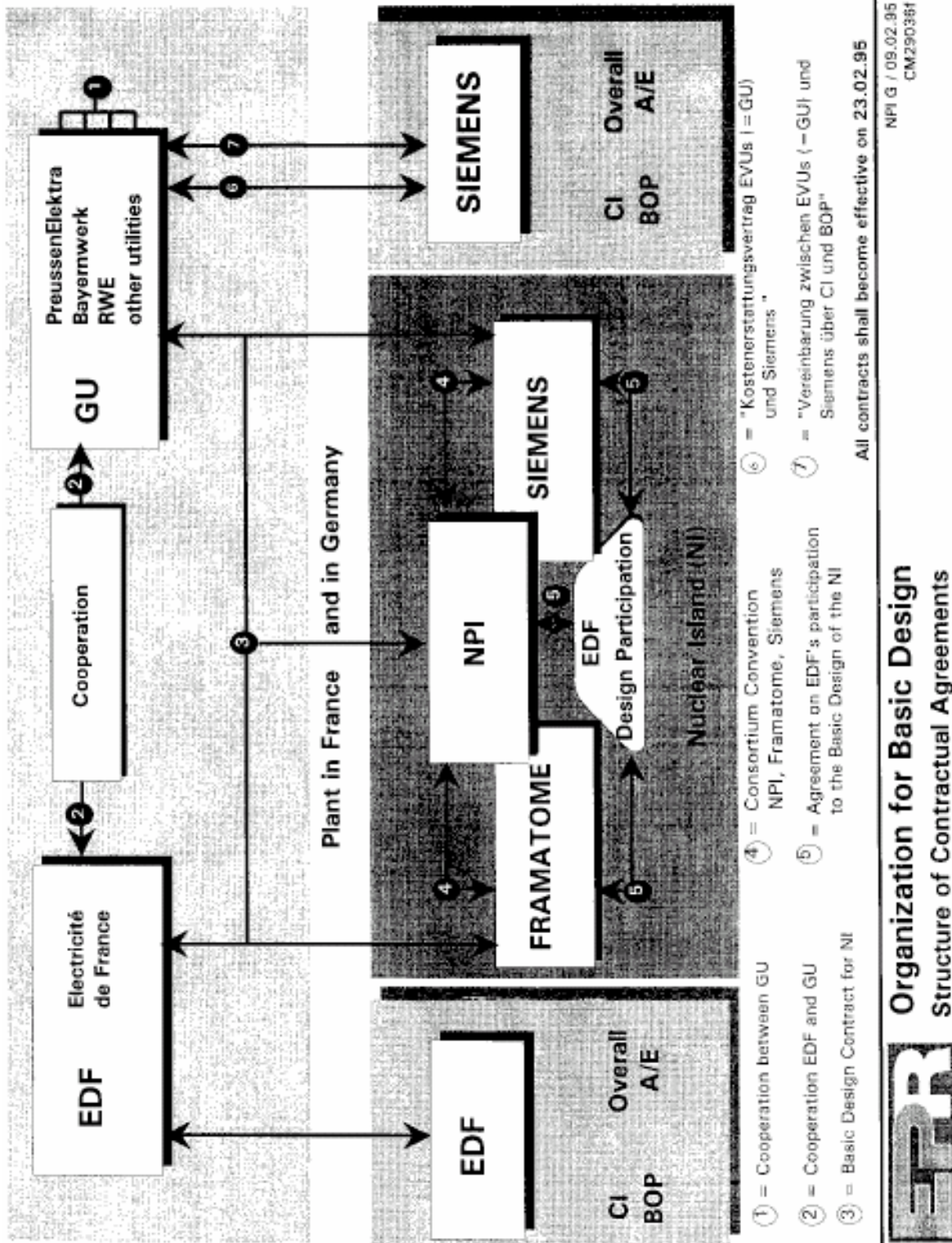
**SUB-CHAPTER 17.2 - TABLE 1**

**Organisational relationships between French and German safety bodies**



**SUB-CHAPTER 17.2 - TABLE 2**

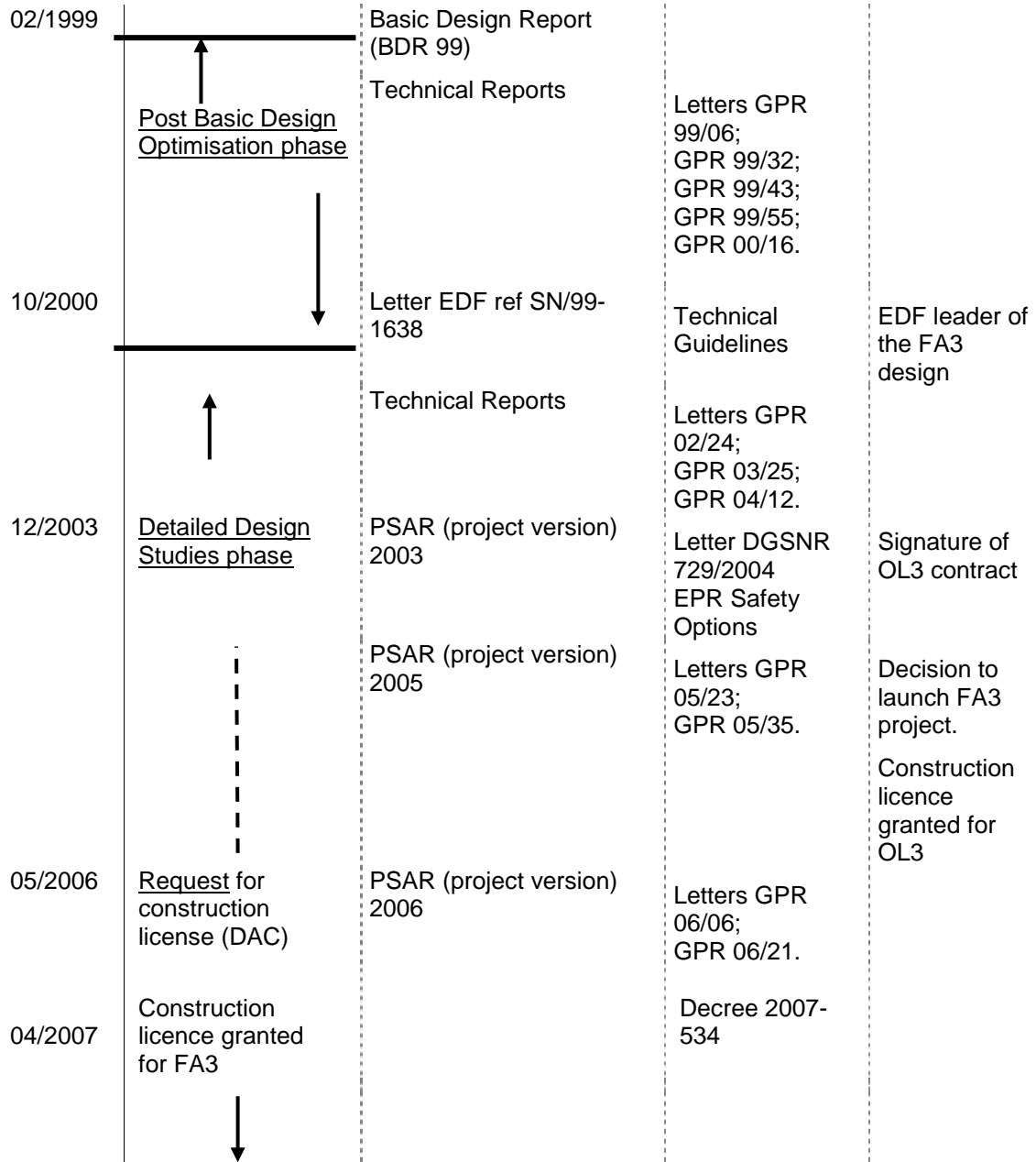
**Organisation of the relationship between French and German co-designers**



**SUB-CHAPTER 17.2 - TABLE 3**

**Different phases of the EPR design process**

Dates	Design Phases	EPR Project deliverables	Safety bodies deliverables	Comments
1986	<p style="text-align: center;">↑</p> <p style="text-align: center;"><u>Preparatory phase</u></p> <p style="text-align: center;">↓</p>		Letter DSIN 984/91	NPI founded in 1989
1991			Letter GPR 93/18	
08/1993	<p style="text-align: center;">↑</p> <p style="text-align: center;"><u>Consolidation phase</u></p> <p style="text-align: center;">↓</p>	Conceptual Safety Features Review File (CSFRF)	<b>Letter DSIN 1321/93</b>	
		Technical Reports	Letters GPR 94/20 ; GPR 94/28; GPR 94/42; GPR 94/50; GPR 94/62; GPR 95/04.	
01/1995	<p style="text-align: center;">↑</p> <p style="text-align: center;"><u>Basic Design phase</u></p> <p style="text-align: center;">↓</p>	Main Features Files (MFF)	<b>Letter DSIN 51/95</b>	Signature of the BD contract
		Technical Reports	Letters GPR 95/54, GPR 95/59; GPR 96/24; GPR 96/25; GPR 96/47; GPR 97/01; GPR 97/25; GPR 97/41; GPR 97/60.	
10/1997	<p style="text-align: center;">↑</p> <p style="text-align: center;"><u>Basic Design Optimisation phase</u></p> <p style="text-align: center;">↓</p>	Basic Design Report (BDR 97)		Signature of the BDOP contract
		Technical Reports	Letters GPR 98/07; GPR 98/15; GPR 98/31.	
11/1998	<p style="text-align: center;">↓</p>	Basic Design Report (BDR 98)		Withdrawal of BMU/RSK



<b>UK EPR</b>	<b>PRE-CONSTRUCTION SAFETY REPORT</b>	SUB-CHAPTER : 17.2
	CHAPTER 17: COMPLIANCE WITH ALARP PRINCIPLE	PAGE : 19 / 31
		Document ID.No. UKEPR-0002-172 Issue 03

### SUB-CHAPTER 17.2 - TABLE 4

#### R&D Programmes/Tests in support to the EPR Design

Components / Event	Physical Phenomena	Experimental Programmes/Tests
Vessel Internals (lower and upper plenums)	Hydraulic	Design relating to the flow distribution is based on STAR-CD calculations with a validation based on tests carried out in the HYDRA mock-up (small scale). The final validation has been achieved on the basis of the JULIETTE and ROMEO tests, for the lower and upper plenums respectively, at a 1/5 scale (Centre Technique du Creusot).
	Flow-induced vibration	Integral test: VIB, 1/8.5 scale mock-up.
Control rods – Rod Cluster Control Assembly (RCCA) guides	Hydraulic and vibration	MAGALY tests, 1/1 scale (design optimisation) CALVA tests
	Materials (wear)	AURORE and FANI tests
	Fatigue	CALVA tests
	Mechanical behaviour in case of LOCA and Earthquake	CALVA tests
Control rod drive mechanism (CRDM)	Many aspects of the CRDM performance, including the rod drop time	KOPRA tests
Heavy reflector	Hydraulic	HCL tests
Loss Of Coolant Accident (LOCA)	Thermal-Hydraulic	Complementary validation database for the CATHARE code (e.g. EPR specific features): UPTF tests [Ref] BETHSY tests (CEA) [Ref]
SGTR	Thermal-Hydraulic	BETHSY tests (CEA)
Steam Generator internals	Thermal-Hydraulic and flow-induced vibrations	Chooz B1 Steam Generator tests (confirmation of the results from CLOTAIRE Programme [Ref] and MEGEVE tests [Ref])
Pressuriser Relief	Hydraulic and Mechanic	Valve prototype tests

<b>UK EPR</b>	<b>PRE-CONSTRUCTION SAFETY REPORT</b>	SUB-CHAPTER : 17.2
		PAGE : 20 / 31
	CHAPTER 17: COMPLIANCE WITH ALARP PRINCIPLE	Document ID.No. UKEPR-0002-172 Issue 03

Components / Event	Physical Phenomena	Experimental Programmes/Tests
Valves		
Core-melt Accident	Steam Explosion	BERDA tests (FZK) [Ref] BILLEAU (CEA) [Ref] and QUEOS (FZK) [Ref] tests PREMIX (FZK) [Ref] and FARO (JRC Ispra) [Ref] tests ECO (FZK) and KROTOS (JRC Ispra) tests [Ref] Analyses in the frame of the OECD SERENA Programme [Ref]
Core-melt Accident	RCP [RCS] behaviour, including impact of RPV failure	Integral tests: PHEBUS FP Programme (IRSN) [Ref] RPV bottom mechanical behaviour: CORVIS (PSI) [Ref] and RUPTHER (CEA) [Ref] tests Corium behaviour in-vessel: KAJET (FZK) and BALI (CEA) tests [Ref], OECD Programmes RASPLAV and MASCA (Kurchatov Institute) [Ref] High Pressure Melt Ejection (corium dispersion) and DCH: SNL tests [Ref] and DISCO tests (FZK) [Ref] Analysis of Thermo-Hydraulic and Thermochemistry coupled phenomena [Ref] Other analytical works using computer codes [Ref]
Core-melt Accident	Hydrogen production in-vessel	CORA tests (FZK) [Ref] QUENCH tests (FZK) [Ref] PHEBUS-FP tests (IRSN) Computer code analyses [Ref]
Core-melt Accident	Hydrogen Distribution in the Reactor Building	OECD State-of-the-art report of interest [Ref] HDR tests [Ref] Battelle tests [Ref] NUPEC tests [Ref] Computer code analyses [Ref]

<b>UK EPR</b>	<b>PRE-CONSTRUCTION SAFETY REPORT</b>	SUB-CHAPTER : 17.2
		PAGE : 21 / 31
		Document ID.No. UKEPR-0002-172 Issue 03
CHAPTER 17: COMPLIANCE WITH ALARP PRINCIPLE		

Components / Event	Physical Phenomena	Experimental Programmes/Tests
		TOSQAN tests (IRSN) [Ref] MISTRA tests (CEA) [Ref] ThAI tests (Becker Technology) and OECD ISP-47 [Ref]
Core-melt Accident	Hydrogen Combustion	OECD State-of-the-art report of interest [Ref] HDC experiments [Ref] HYCOM Programme [Ref], including tube experiments TORPEDO, DRIVER and RUT Detonation tests at FZK [Ref] and TUM [Ref] ENACCEF tests (CNRS Orleans)
Passive Autocatalytic Recombiners	-	KALI H2 tests (CEA) [Ref] Battelle MC tests [Ref] H2PAR tests (CEA-IRSN) [Ref] Qualification Programme of the AREVA PARs [Ref]
Core-melt Accident	Fission Product Transport in the core and primary system	PHEBUS-FP Programme (IRSN) [Ref], LOFT (INEL) [Ref] FALCON tests (AEA-Winfrith) [Ref] CHIP tests (CEA) [Ref]
	Fission Product Resuspension	STORM tests (JRC Ispra) [Ref] KAREX tests (FZK)
	Iodine behaviour	ThAI experiments [Ref] PARIS tests (AREVA) [Ref] SISYPHE tests (IRSN) [Ref] EPICUR tests (IRSN) [Ref]
	Aerosol Transport in the Reactor Building	KAEVER [Ref] (ISP-44)

Components / Event	Physical Phenomena	Experimental Programmes/Tests
Containment wall - Liner	Mechanical, Leakage	MAEVA (EDF)
Core-Catcher	Molten Core – Concrete Interaction (MCCI)	BETA tests (FZK) [Ref] ACE tests (ANL) [Ref] MACE tests (ANL) [Ref] BALI [Ref] and BALISE [Ref] tests (CEA) CORESA tests (Germany) [Ref] OECD MCCI Programme (tests at ANL)
Core-Catcher	Corium – ZrO <sub>2</sub> interaction	CIRMAT tests (LSK Saint-Petersburg) and CORESA programme (Germany) [Ref]
Core-Catcher	Melt Plug behaviour	KAPOOL tests (FZK) [Ref]
Core-Catcher	Corium spreading	CORINE tests (CEA) [Ref] KATS tests (FZK) [Ref] COMAS tests (SNT) [Ref] VULCANO tests (CEA) [Ref] FARO spreading tests (JRC Ispra) [Ref] S3E test (RIT) [Ref]
Core-Catcher	Corium Quenching	MACE tests (ANL) [Ref] KAPOOL tests (FZK) [Ref] PERCOLA tests (CEA) [Ref] SSWICS tests (ANL) [Ref] ECOKATS tests (FZK)
Core-Catcher	Long Term Corium Cooling	Corium behaviour: SULTAN tests (CEA) [Ref] Core Catcher Cooling Channel Thermal-Hydraulic tests (AREVA Erlangen) [Ref]

## SUB-CHAPTER 17.2 – REFERENCES

External references are identified within this sub-chapter by the text [Ref] at the appropriate point within the sub-chapter. These references are listed here under the heading of the section or sub-section in which they are quoted.

### 1. INTRODUCTION

[Ref] UK Health and Safety Executive (HSE). Technical Assessment Guide, ND Guidance on the Demonstration of ALARP (As Low As is Reasonably Practicable). T/AST/005 Issue 4 Revision 1. January 2009. (E)

### 2. EPR DESIGN PROCESS

[Ref] "Technical Guidelines for the design and construction of the next generation of nuclear pressurized water reactors" adopted during plenary meetings of the GPR and German experts on the 19 and 26 October 2000. (E)

#### 2.2 MAIN PHASES OF THE EPR PROJECT

[Ref] EPR Conceptual Safety Features Review File; report jointly prepared by EDF, German Utilities, NPI, Siemens, FRAMATOME. August 1993. (E)

[Ref] "Technical Guidelines for the design and construction of the next generation of nuclear pressurized water reactors" adopted during plenary meetings of the GPR and German experts on the 19 and 26 October 2000. (E)

### 4. INCORPORATION OF EXPERIENCE FEEDBACK INTO THE EPR DESIGN

[Ref] Generic Safety Issues for Nuclear Power Plants with Light Water Reactors and Measures taken for their Resolution. IAEA Technical Document IAEA-TECDOC-1044. IAEA. Vienna. September 1998. (E)

### 5. COMPARISON OF EPR DESIGN WITH HSE/NII SAPS

[Ref] UK Health and Safety Executive (HSE). Safety Assessment Principles for Nuclear Facilities. 2006 Edition Revision 1. January 2008. (E)

[Ref] UK Health and Safety Executive (HSE). Technical Assessment Guide, ND Guidance on the Demonstration of ALARP (As Low As is Reasonably Practicable). T/AST/005 Issue 4 Revision 1. January 2009. (E)

[Ref] Comparison of EPR Design with HSE/NII SAPS. UK EPR Report UKEPR-0005-001 Issue 00. AREVA/EDF. June 2008. (E)

### **SUB-CHAPTER 17.2 - TABLE 4**

#### **R&D Programmes/Tests in support to the EPR Design**

LOCA:

[Ref] Reactor Safety Issues Resolved by the 2D/3D program GRS report 101 Sept. 1993 2D/3D Program. Work summary report GRS 100. December 1992. (E)

[Ref] Rapport synthétique d'évaluation BETHSY.  
[Summary report of BETHSY Assessment.]  
CEA, IRSN, EDF, FRAMATOME ANP. SETEX/LETS/02-166. June 2002.

Steam Generator internals:

[Ref] The CLOTAIRE International Program – Local Thermohydraulics Measurements in PWR steam Generators Wuhan Conference (China). September 1990. (E)

[Ref] Axial Economiser steam generator, Transient simulation NURETH 6. (E)

[Ref] The MEGEVE tests and their analysis by the computer code ANETH Proceedings 6<sup>th</sup> International topics – Meeting on Nuclear Thermalhydraulic Grenoble. France. October 1993 (E)

[Ref] Starting up of new steam generator of 1450 MWe plants. 3<sup>rd</sup> International Steam Generator and Heat Exchanger Conference. Toronto, Canada. June 1998. (E)

Core-melt Accident, Steam Explosion:

[Ref] R. Krieg et al. Slug impact loading on the vessel head during a postulated steam explosion in pressurised water reactors. Nuclear Technology 111, p 369. 1995. (E)

[Ref] R. Krieg et al. Model experiments BERDA describing impacts of molten core materials against a PWR vessel head. International Conference on Advanced Reactor Safety ARS. Orlando, Florida. June 1997. (E)

[Ref] W. Schütz et al. Steam explosion experiments – CEA/FZK Seminar on EPR-related severe accidents research. Karlsruhe. November 1996 (E)

[Ref] L. Meyer et al. Investigation of the premixing phase of the steam explosion with hot spheres - International Conference on Advanced Reactor Safety ARS – Orlando, Florida. June 1997 (E)

[Ref] W. Schütz et al. PREMIX, an experimental approach to investigate the mixing behaviour of a hot melt being poured into water - International Conference on Advanced Reactor Safety ARS – Orlando, Florida. June 1997 (E)

[Ref] D. Magallon et al. Status of FARO/KROTOS melt coolant interaction tests. Water Reactor Safety Meeting. Bethesda, Maryland, USA. October 1995. (E)

**[Ref]** P. Piluso et al. Steam explosion of Alumina in Krotos Facility : Is There a Material Effect. ICAPP-05. Seoul, Korea. May 15-19 (2005). (E)

**[Ref]** R. Meignen (IRSN). D. Magallon (CEA). Comparative Review of FCI Computer Models Used in the OECD-SERENA Program. Proceedings of ICAPP 05. Seoul, Korea. Paper 5087. May 15-19. 2005. (E)

**[Ref]** D. Magallon et al. Status of International Programme SERENA on Fuel Coolant Interaction. ICAPP 05. Seoul, Korea. May 15-19 (2005). (E)

Core-melt Accident, RCS behaviour, including impact of RPV failure:

**[Ref]** A. Tattegrain. PHEBUS probes core meltdown behaviour : the first results Nuclear Europe Worldscan 9610 – 1995 (E)

**[Ref]** A. Jones et al. PHEBUS FP Test Matrix. JRC Technical Note Nr I 96.26. February 1996. (E)

**[Ref]** Proceedings of the PHEBUS FP 4th technical seminar. Marseille. March 20-22. 2000. (E)

**[Ref]** Proceedings of the 5th technical seminar. Aix-en-Provence. June 24-26. 2003. (E)

**[Ref]** H. Hirschmann et al. CORVIS. Investigation of Light Water Reactor Lower Head Failure Modes. Nuclear Engineering and Design Vol. 168. pp. 77-104. 1997. (E)

**[Ref]** J. Devos et al. Pressure vessel and piping design, analysis and severe accidents. ASME Vol. 331. 1996. (E)

**[Ref]** J.M. Bonnet et al. Large scale experiments for core melt retention. Workshop on large molten pool heat transfer. CEN Grenoble. France March 1994. (E)

**[Ref]** M. Barrachin, F. Defoort. Thermophysical Properties of In-Vessel Corium: MASCA Programme Related Results. Proceedings of MASCA Seminar. Aix en Provence, France. 10-11 June 2004. (E)

**[Ref]** T.K. Blanchet, M.M. Pilch, R. Y. Lee, L. Meyer, M. Pellt. Direct Containment Heating Experiments at Low Reactor Coolant System Pressure in the Surtsey test facility. Scandia National Laboratory report. NUREG/CR. 5746. SAND 99-1634. 1999. (E)

**[Ref]** L. Meyer et al. Corium dispersal and direct containment heating at low system pressure. Submitted at the 10<sup>th</sup> International Topical Meeting of Nuclear Reactor Thermal Hydraulics. NURETH 10. Seoul, Korea. October 5-9. 2003. (E)

**[Ref]** D. Wilhelm. Recalculation of corium dispersal experiments at low pressure. Submitted at the 10<sup>th</sup> International Topical Meeting of Nuclear Reactor Thermal Hydraulics. NURETH 10. Seoul, Korea. October 5-9. 2003. (E)

**[Ref]** J.M. Seiler et al. Theoretical Analysis for Corium Pool with Miscibility Gap. Nuclear Technology. 141, 233, 2003. (E)

**[Ref]** B. Adroguer et al. Core loss during a severe accident (COLOSS). Nuclear Engineering and Design. Vol. 221, 55-76. 2003. (E)

Core-melt Accident, Hydrogen production in-vessel:

- [Ref] S. Hagen et al. Comparison of the Quench experiments CORA 12, 13, 17. International Quench Workshop Karlsruhe. FZK. 4-6 October 1995. (E)
- [Ref] B.R. Sehgal et al. Assessment of reactor vessel integrity (ARVI). Nuclear Engineering and Design Vol. 221. 25-53. 2003. (E)
- [Ref] G. Azarian et al. Qualification of the MAAP4.04 code on the QUENCH-03 experiment. Proceedings of the 6th International QUENCH workshop. Karlsruhe. October 2000. (E)
- [Ref] W. Hering, Ch. Homann, J.S. Lamy. ISP 45-OECD Comparison report on the Blind Phase of the OECD International Standard Problem No.45 Exercise (QUENCH-06). Report FZKA-6677. March 2002. (E)
- [Ref] A. Tattegrain. PHEBUS probes core meltdown behaviour : the first results. Nuclear Europe Worldscan 9610. 1995. (E)
- [Ref] A. Jones et al. PHEBUS FP Test Matrix. JRC Technical Note Nr I 96.26 – February 1996 (E)
- [Ref] Proceedings of the PHEBUS FP 4th technical seminar – Marseille. March 20-22. 2000. (E)
- [Ref] Proceedings of the 5th technical seminar - Aix-en-Provence. June 24-26. 2003. (E)
- [Ref] Study of the mixing of immiscible liquids. Results of the BALISE experiments Submitted at the 10<sup>th</sup> International Topical Meeting of Nuclear Reactor Thermal Hydraulics. NURETH 10. Seoul, Korea. October 5-9. 2003. (E)
- [Ref] B. Adroguer et al. COLOSS – CORE LOSS during a severe accident. Nuclear Engineering and Design Vol. 235, 173-198. 2005. (E)

Core-melt Accident, Hydrogen Distribution in the Reactor Building:

- [Ref] H. Karwat et al. SOAR on containment thermohydraulics and hydrogen distribution. NEA/CSNI/R(99) 16 June 1999. (E)
- [Ref] P. Royl et al. Analysis of Mitigating Measures during Steam/Hydrogen Distributions in Nuclear Reactor Containments with the 3d field Code GASFLOW. OECD workshop on the implementation of hydrogen mitigation techniques – Winnipeg, Manitoba, Canada. May 1996. (E)
- [Ref] L. Wolf et al. Detailed Assessment of the HDR mixing experiments E11. Proc. Intern. Conf. "New trends in Nuclear System Thermohydraulics" Pisa, Italy. 1994. (E)
- [Ref] T. Kanzleiter. HYJET/PACOS Versuche im Modelcontainment. Abschlussbericht. [HYJET/PACOS Tests in the Model Containment. Final Report.] Battelle Report BMBF BF-R40.075-01. December 1996
- [Ref] G. Langer et al. Experimental investigation of the hydrogen distribution in the containment of a light water reactor following a coolant loss accident. Battelle Report BF-R-63.363.3 NRC Translation 801. 1980 (E)

- [Ref] H. Tekuza et al. Final Comparison Report on ISP-35: NUPEC Hydrogen Mixing and distribution Test M-7-1. OECD Report OECD/GD (95) 29 NEA/CSNI/R (94) 29 Paris. December 1994. (E)
- [Ref] P. Royl et al. Analyses of containment experiments with GASFLOW II. Submitted at the 10<sup>th</sup> International Topical Meeting of Nuclear Reactor Thermal Hydraulics. NURETH 10. Seoul, Korea. October 5-9. 2003. (E)
- [Ref] J. Vendel et al. "ISP 47" containment hydraulic computer code exercise based on experimental facilities. Submitted at the 10<sup>th</sup> International Topical Meeting of Nuclear Reactor Thermal Hydraulics. NURETH 10. Seoul, Korea. October 5-9. 2003. (E)
- [Ref] E. Studer et al. On the Use of the MISTRA Coupled Effect Test Facility for the Validation of Containment Thermal-hydraulic codes. Submitted at the 10<sup>th</sup> International Topical Meeting of Nuclear Reactor Thermal Hydraulics. NURETH 10. Seoul, Korea. October 5-9. 2003. (E)
- [Ref] T. Kanzleiter et al. First results of the ThAI Thermal Hydraulic containment Tests. ICONE 9. Nice. April 2001. (E)
- [Ref] T. Kanzleiter et al. ThAI multicompartment experiments with atmospheric stratification. NURETH 11. Avignon. October 3-6. 2005. (E)

Core-melt Accident, Hydrogen Combustion:

- [Ref] W. Breitung et al. SOAR on flame acceleration and deflagration to detonation transition in nuclear safety. NEA/CSNI/R(2000)7. August 2000. (E)
- [Ref] A. Vesper et al. Multicompartimental simulation of Hydrogen Distribution and Turbulent Combustion in Severe Accidents (HDC). European Commission: FISA 99 EU Research in Reactor Safety. 29. November-1- December 1999 (E)
- [Ref] T. Büscher et al. Analyse Der Bedeutung der Phänomene HPME/DCH und Dampfexplosion für den Quellterm im Sicherheitsbehälter bei schweren Störfällen. Abschlussbericht zum Forschungsvorhaben BMWA 1501084. LEE-10 [Analysis of the Significance of the Phenomena HPME/DCH and Steam Explosion for the Source Term in the Containment of Light Water Reactors in Case of Severe Accidents. Final Report, Reactor Safety Research Project No. 1501084]. August 2003.
- [Ref] W. Breitung et al. Integral large scale experiments on hydrogen combustion for severe accident code validation - HYCOM. Nuclear Engineering and Design 235 253-274. 2005. (E)
- [Ref] M. Heitsch et al. Improvement and application of hydrogen combustion models. Submitted at the 10<sup>th</sup> International Topical Meeting of Nuclear Reactor Thermal Hydraulics. NURETH 10. Seoul, Korea. October 5-9. 2003. (E)
- [Ref] W. Breitung. Numerical Simulation of Turbulent Hydrogen Deflagration in Severe Reactor Accidents. FZK Nachrichten - NR 28. Heft 213. S 175.1996. (E)
- [Ref] B. Durst et al. Investigation of turbulent deflagrations with representative Flow obstacles. OECD workshop on the implementation of hydrogen mitigation techniques. Winnipeg, Manitoba, Canada. May 1996. (E)

**[Ref]** N. Arey et al Influence of transport phenomena on the structures of lean premixed hydrogen air flames. Winter Meeting "Thermalhydraulics of Severe Accidents" ANS 1995. (E)

Passive Autocatalytic Recombiners:

**[Ref]** O. Braillard et al. Test of passive catalytic recombiners (pars) for combustible gas control in nuclear power plants. International Topical Meeting on Advanced Reactor Safety ARS. Orlando, Florida. June 1997 (E)

**[Ref]** T. Kanzleiter. Experimental Investigation on Recombiner Efficiency in the Battelle Model Containment. International Workshop on Hydrogen Research for Reactor Safety Munich. September 1994. (E)

**[Ref]** M. Carcassi et al. HYMI: final summary report. CONT-HYMI (99) – P035.1999 and references therein (E)

**[Ref]** E. Studer et al. The H2PAR facility for hydrogen research. OECD workshop on the implementation of hydrogen mitigation techniques. Winnipeg, Manitoba, Canada. May 1996. (E)

**[Ref]** E. Studer et al. Assessment of hydrogen risk in PWR. Eurosafe. November 1999. (E)

**[Ref]** B. Eckardt et al. Containment hydrogen control and filtered venting design and implementation. Proceedings of the OECD Workshop on the implementation of severe accident management measures held at PSI. Villingen, Switzerland. September 2001. (E)

**[Ref]** Description of the PAR Qualification Tests. Framatome Technical Report NGPS5/2004/en/0076 Rev. B; EdF CP0, CPY Plants. 2004. (E)

Core-melt Accident, Fission Product Transport in the core and primary system:

**[Ref]** A. Tattegrain. PHEBUS probes core meltdown behaviour: the first results. Nuclear Europe Worldscan 9610. 1995. (E)

**[Ref]** A. Jones et al. PHEBUS FP Test Matrix. JRC Technical Note Nr I 96.26. February 1996. (E)

**[Ref]** Proceedings of the PHEBUS FP 4th technical seminar. Marseille. March 20-22. 2000. (E)

**[Ref]** Proceedings of the 5th technical seminar. Aix-en-Provence. June 24-26. 2003. (E)

**[Ref]** M.L. Charbonneau et al. Experimental Analysis and Summary Report for LOFT. Project Fission Product Experiment LOFT FP2. OECD LOFT6T63806. June 1989. (E)

**[Ref]** A.M. Beard et al. FALCON Experiments: a comparison of FALCON tests Fal 17 and Fal 18. AEA RS 2380. March 1993. (E)

**[Ref]** M. Firnhaber et al. Draft Specification of the International Standard Problem ISP 44: KAEVER. Experiments on the Behaviour of Core-Melt Aerosols in a LWR Containment. GRS. January 2000. (E)

## Fission Product Resuspension:

[Ref] J.A. Captao. 5th STORM Meeting: Analysis and First Experimental Results. JRC Technical Note Nr. I 96.08. January 1996. (E)

## Iodine behaviour:

[Ref] T. Kanzleiter et al. First results of the ThAI Thermal Hydraulic containment Tests. ICONE 9. Nice. April 2001. (E)

[Ref] T. Kanzleiter et al. ThAI multi-compartment experiments with atmospheric stratification. NURETH 11. Avignon. October 3-6. 2005. (E)

[Ref] F. Funke et al. Multi-compartmental Iodine Tests at the ThAI Facility. Eurosafe. Berlin. 2004. (E)

[Ref] G. Langrock. Final Report on the PARIS Project. Work Report NGTR/2005/0199. Framatome. 2005. (E)

[Ref] P. Spitz et al. Mass Transfer Programme in SISYPHE facility. Proceedings of the 5th technical seminar. Aix-en-Provence. June 24-26. 2003. (E)

[Ref] B. Clement. Towards reducing the uncertainties on Source Term Evaluations: an IRSN/CEA/EdF R&D programme. Eurosafe. Paris. 2003. (E)

## Aerosol Transport in the Reactor Building:

[Ref] M. Firnhaber et al. Draft Specification of the International Standard Problem ISP 44: KAEVER. Experiments on the Behaviour of Core-Melt Aerosols in a LWR Containment. GRS. January 2000. (E)

## Core-Catcher, Molten Core – Concrete Interaction (MCCI):

[Ref] Alsmeyer et al. BETA experimental results on melt/concrete interaction. CSNI Specialist's Meeting on Core-Debris-Concrete Interaction. EPRI-NP-5054-5R, pp2-2 and 2-17. February 1987. (E)

[Ref] D H Thompson et al. Compilation, analysis and interpretation of ACE phase C and MACE experimental data – MCCI / Thermohydraulic results. ACEX TR-C-14, Vol 1. Argonne Nat. Lab. November 1997. (E)

[Ref] M.T. Farmer. M1b Data Report. ACE-TR-D6, Argonne Nat. Lab. September 1992. (E)

[Ref] M.T. Farmer. MACE test M3b. Data Report MACE-TR-D13. Vol. 1/2. Argonne Nat. Lab.. August 1999 (E)

[Ref] M.T. Farmer. MACE Test M4. Data Report - Argonne Nat. Lab.. August 1999. (E)

[Ref] J.M. Bonnet. Thermal hydraulic phenomena in corium pools for ex-vessel situations: the BALI experiment. OECD Workshop on ex-vessel coolability. Karlsruhe, Germany. FZKA 64753. 1999. (E)

[Ref] TR 61, 'Description, validation and application of the MCCI code COSACO'. Framatome Work Report NGPS4/2004/en/0100 Rev. B. 24.05.2004. (E)

**[Ref]** W. Steinwarz et al. Experimental investigations on Corium interaction with refractory and sacrificial layers (CORESA). BMWI project 1501212. Final report SNT-AB-2002-01. Siempelkamp Nukleartechnik GmbH. (E)

**[Ref]** M. Fischer et al. Experimental investigations on Corium interaction with refractory and sacrificial layers (CORESA). BMWI project 1501211. Final report. FRAMATOME ANP GmbH. October. 2002. (E)

Core-Catcher, Corium – ZrO<sub>2</sub> interaction:

**[Ref]** W. Steinwarz et al. Experimental investigations on Corium interaction with refractory and sacrificial layers (CORESA). BMWI project 1501212. Final report SNT-AB-2002-01. Siempelkamp Nukleartechnik GmbH. (E)

**[Ref]** M. Fischer et al. Experimental investigations on Corium interaction with refractory and sacrificial layers (CORESA). BMWI project 1501211. Final report. FRAMATOME ANP GmbH. October 2002. (E)

Core-Catcher, Melt Plug behaviour:

**[Ref]** B. Eppinger, F. Fellmoser, G. Fieg, H. Massier, G. Stern. Experiments on concrete erosion by a Corium melt in the EPR cavity: KAPOOL 6-8. FZKA 6453. Forschungszentrum Karlsruhe. March 2001. (E)

Core-Catcher, Corium spreading:

**[Ref]** J. M. Vetteau et al. CORINE Experiments and Theoretical Modelling. FISA 95 Symposium EU Research on Severe Accidents. Luxembourg. November 1995. (E)

**[Ref]** G. Fieg et al. Simulation Experiments on the spreading behaviour of Molten Core Melts. 1996 National Heat Transfer Conference. Houston. August 1996. (E)

**[Ref]** W. Scholtyssek et al. Recent Results of Melt Spreading and Cooling Experiments at Forschungszentrum Karlsruhe - the KATS and COMET Projects. CSARP Meeting. Bethesda. May 1996. (E)

**[Ref]** B. Eppinger et al. Simulationsexperimente zum Ausbreitungsverhalten von Kernschmelze: KATS 8-17.  
[Simulation Experiments on the Spreading Behaviour of Core Melts: KATS 8-17]. FZKA 6589. Forschungszentrum Karlsruhe. March 2001.

**[Ref]** Sappok, Steinwartz. Large Scale Experiments on Ex-vessel Core Melt Behaviour. International Conference on Advanced Reactor Safety ARS. Orlando. Florida June 1997. (E)

**[Ref]** G. Cagnet et al. Corium spreading and coolability. FISA 97 Symposium on EU Research on Severe Accidents. November 1997. (E)

**[Ref]** I.M. Shepberd et al. Modelling fission product vapour transport for the FALCON facility. Nuclear Technology 110, p 181-187. 1988. (E)

**[Ref]** H. Wider. Transient Cooling of Shallow Debris Beds in the First Two FARO LWR Experiments. Nuclear Engineering and Design 157, p 395-408. 1995. (E)

**[Ref]** B.R. Seghal et al. Experimental investigation of melt spreading in one-dimensional channel. Report EU-CSC-1D1-97. Royal Institute of Technology. Stockholm. August 1997. (E)

Core-Catcher, Corium Quenching:

**[Ref]** M.T. Farmer. M1b Data Report. ACE-TR-D6. Argonne Nat. Lab. September 1992. (E)

**[Ref]** M.T. Farmer. MACE test M3b. Data Report MACE-TR-D13. Vol. 1/2. Argonne Nat. Lab.. August 1999 (E)

**[Ref]** M.T. Farmer. MACE Test M4. Data Report - Argonne Nat. Lab.. August 1999. (E)

**[Ref]** B. Eppinger, F. Fellmoser, G. Fieg, H. Massier, G. Stern. Experiments on concrete erosion by a Corium melt in the EPR cavity: KAPOOL 6-8. FZKA 6453. Forschungszentrum Karlsruhe. March 2001. (E)

**[Ref]** J.M. Bonnet, J.M. Seiler. Coolability of corium spread onto concrete under water, the PERCOLA model. Proceedings of the 2<sup>nd</sup> OECD (NEA) CSNI Specialist Meeting on Molten Core Debris-Concrete Interactions, pp. 347-354. Karlsruhe, Germany. April 1992. (E)

**[Ref]** E. Studer et al. On the Use of the MISTRA Coupled Effect Test Facility for the Validation of Containment Thermal-hydraulic codes. Submitted at the 10<sup>th</sup> International Topical Meeting of Nuclear Reactor Thermal Hydraulics. NURETH 10. Seoul, Korea. October 5-9. 2003. (E)

Core-Catcher, Long Term Corium Cooling:

**[Ref]** M. T. Farmer, S.Lomperski (ANL), S. Basu (US-NRC). Status of the Melt Coolability and Concrete Interaction (MCCI) Program at Argonne National Laboratory. Paper 5644. Proceedings of ICAPP '05; Seoul, Korea. May 15-19. 2005. (E)

**[Ref]** S. Rouge, I. Dor, G. Greffraye. Reactor Vessel External cooling for Corium Retention - SULTAN Experimental Program and Modelling with CATHARE Code. OECD Workshop on In-Vessel debris retention and coolability. Garching. Germany. 3-6 March 1998. (E)